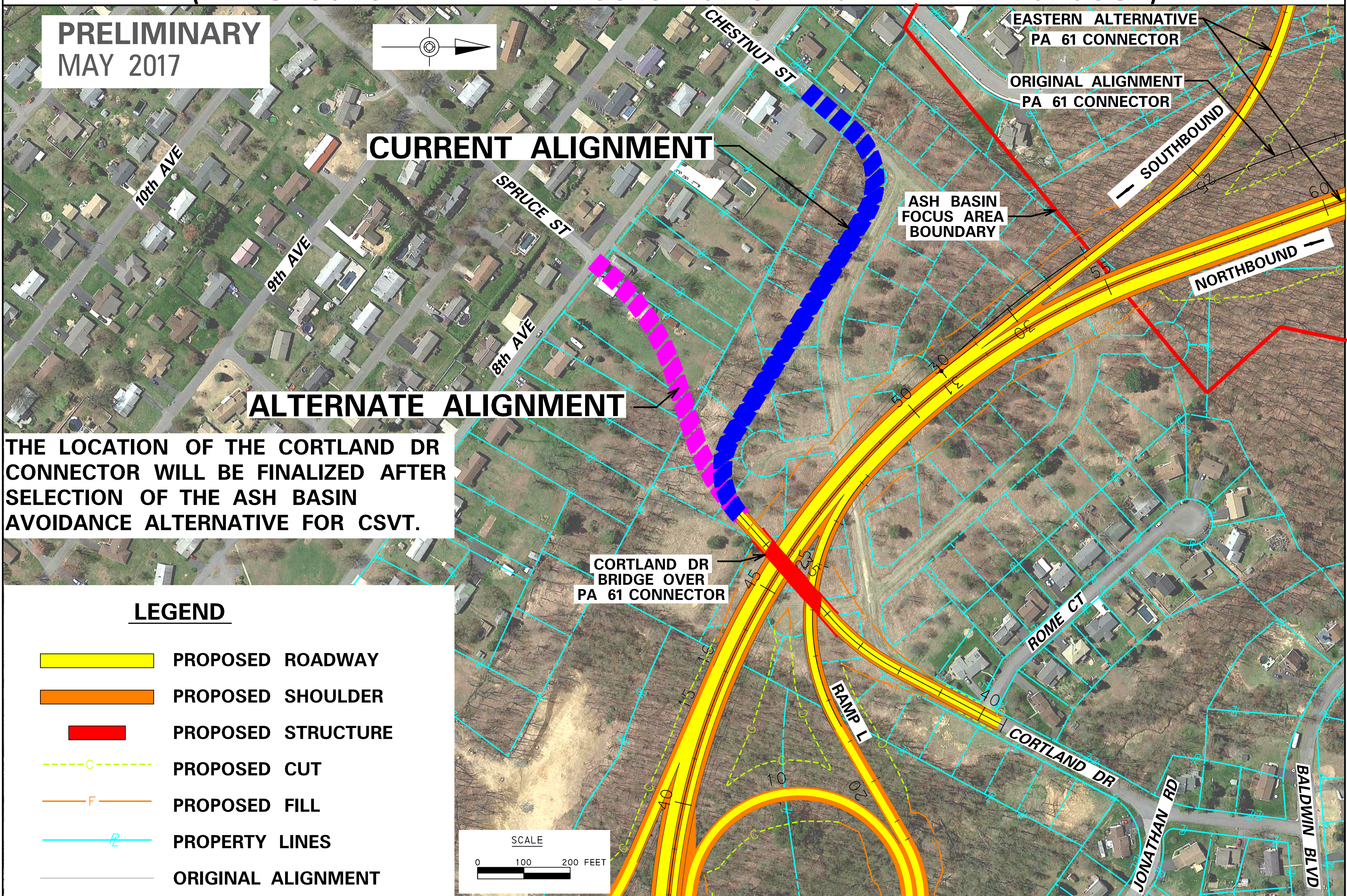


CORTLAND DRIVE CONNECTOR FOR CSVT EASTERN ALTERNATIVE

- - CURRENT ALIGNMENT CONNECTS TO CHESTNUT ST. (APPROVED IN FEIS)
- - ALTERNATE ALIGNMENT CONNECTS TO SPRUCE ST.
(BEING CONSIDERED AT REQUEST OF SHAMOKIN DAM BOROUGH)

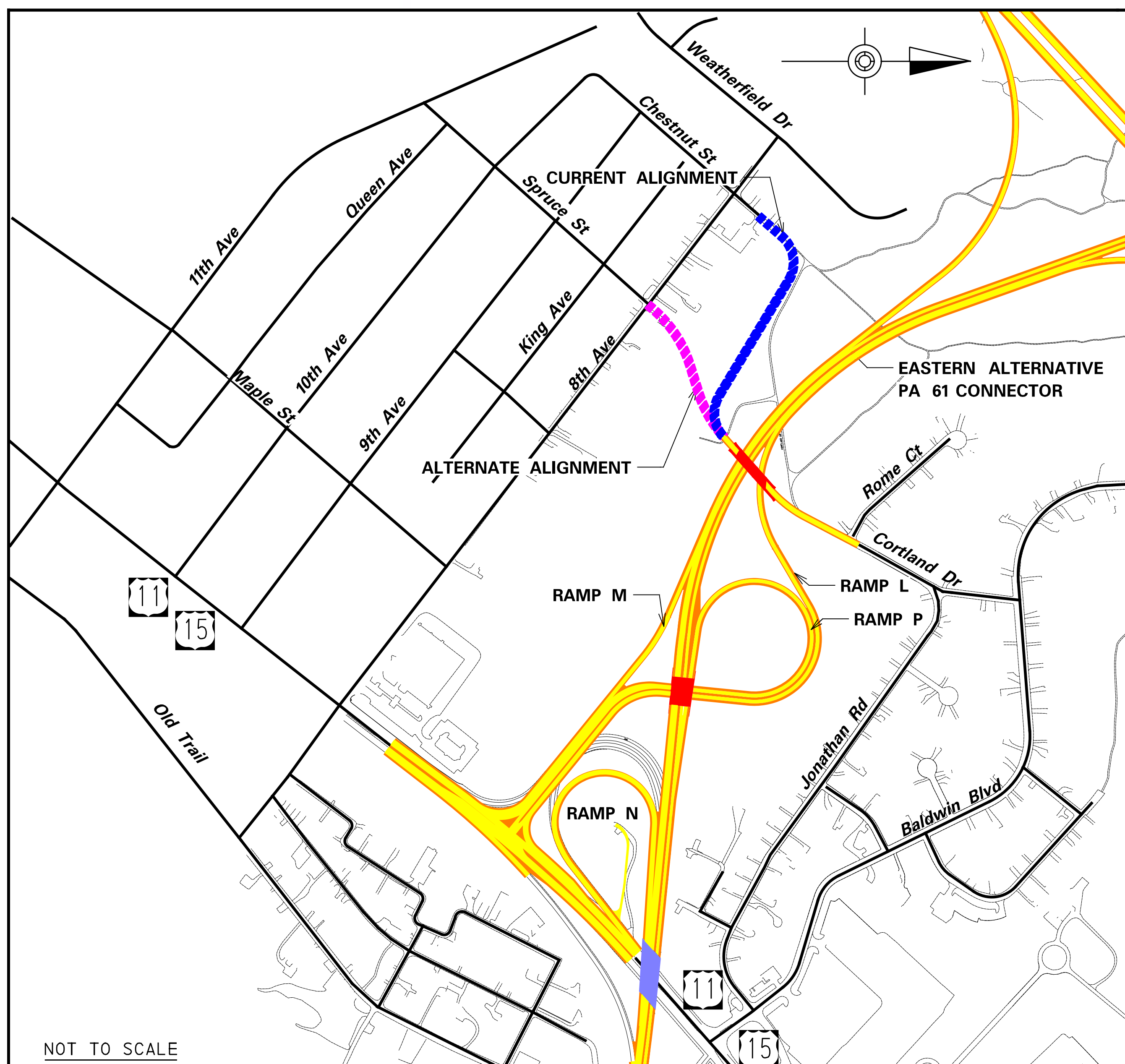
**PRELIMINARY
MAY 2017**



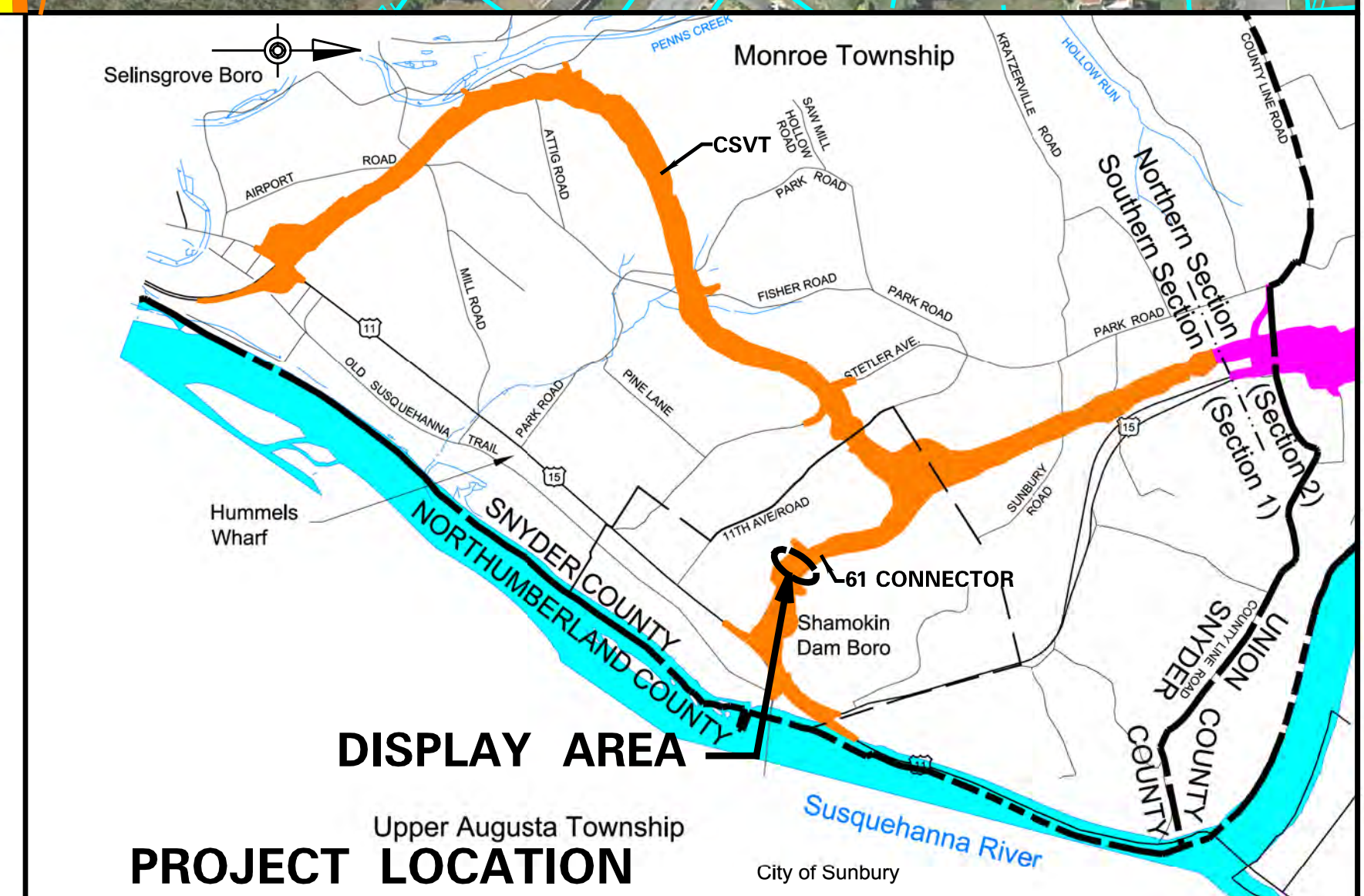
THE LOCATION OF THE CORTLAND DR CONNECTOR WILL BE FINALIZED AFTER SELECTION OF THE ASH BASIN AVOIDANCE ALTERNATIVE FOR CSVT.

LEGEND

- PROPOSED ROADWAY
- PROPOSED SHOULDER
- PROPOSED STRUCTURE
- PROPOSED CUT
- PROPOSED FILL
- PROPERTY LINES
- ORIGINAL ALIGNMENT



SHAMOKIN DAM BOROUGH LOCATION MAP



**PRELIMINARY
MAY 2017**

CORTLAND DRIVE CONNECTOR

S.R. 15, Section 088
Central Susquehanna Valley
Transportation Project
Southern Section
Snyder County

